

# Bedfordshire Matters

## CPRE rejects plans for one million new homes from Oxford to Cambridge

The Chancellor has given the green light for an Oxford to Cambridge growth corridor, backing the objective of the National Infrastructure Commission (NIC) to build one million homes across this largely rural area. That's the equivalent of twenty cities the size of the city of Cambridge (50,000 homes) over the Corridor which is less than 100 miles in length.

The growth corridor between Oxford and Cambridge includes Milton Keynes and Bedford, and extends across a broad

area reaching as far as Dunstable and Northampton.

A report published by the NIC a few days before the autumn budget proposes that some of this growth in housing may be concentrated in the Marston Vale between Milton Keynes, Aspley Guise and Bedford, focused around a few key rail nodes in the area.

Major development around Bedford is also proposed, alongside huge expansion in and around the Sandy area and along

### In this issue:

2

What's happened to democratic planning?

4-5

30th anniversary photo competition winners

7

Affordable homes a top priority for CPRE

10

Meet our new branch manager

the A1 corridor, potentially supporting the development of a large town.

The report also talks about the creation of 'small' garden towns of around 10,000 homes and new cities of up to 150,000 homes (i.e. bigger than Oxford and Cambridge). All this in addition to new homes currently included in the Local Plans.

[Continued on page 3](#)



## Photo competition winner!

### Blowing in the Wind by David Bond

This dynamic shot shows a backdrop of contrasting wind turbines against a cloudy sky, set against a yellow field of barley in Langford. The judges especially liked the colour, contrast and composition of the shot. The wind turbines also reflect a recent change in the countryside across Bedfordshire.

[See the other winning entries on page 4](#)

# Report from the Chair

Gerry Sansom



As CPRE Bedfordshire sees out our 30th Anniversary year we look back with some pride on our achievements protecting the Bedfordshire countryside and urban green spaces.

The key person in our organisation is our Branch Manager, our only paid employee. For the last four years this has been Nicola Scholfield and it was with much regret that we said goodbye to her in November. I'd like to take this opportunity on behalf of the Trustees and members to thank Nicola for all her hard work and commitment to CPRE Bedfordshire. Nicola has had a huge and very positive impact on our work and our organisation and we all wish her every success in the future.

At the same time it is with very great pleasure that we welcome our new Branch Manager Susan Walls. Susan has recently moved to Bedfordshire from

Cambridgeshire and is really keen to continue to develop the great work that Nicola has been doing.

## Local Democracy

Elsewhere in this newsletter the Local Plans are again the hot topic. We wonder what is driving our Local Authorities when they are developing Local Plans and housing policy – who exactly are they representing? What is happening to local democracy?

Certainly they've been elected by local people and so, in principle, they should be representing us. Well, it now appears that that's the last thing they're interested in doing.

When was it that the Mayor of Bedford Borough and the Leader of Central Bedfordshire Council stood up and told us that they had proposed to the National Infrastructure Commission (NIC) the development of one million new homes across the Oxford – Milton Keynes – Bedford – Cambridge corridor and a population increase of +1.6 million people?

CPRE Bedfordshire has been warning for the last year that this was the real reason for the huge new housing

numbers in the Local Plans – more than double the housing needs of local people – eating up the Bedfordshire countryside to encourage huge numbers of people to move here from elsewhere in the UK.

Now it's all been made clear. When Lord Adonis, Chair of the NIC, made his presentation last month on national radio and TV he said that the Local Authorities were in full agreement with his proposals for one million new homes.

Why then, is their commitment to one million new homes not proudly displayed on the council's websites and incorporated into their Local Plan consultation process – is it because they're concerned about what the local people they represent might think about these massive and totally unjustifiable numbers – or that the Local Plan housing numbers had already been decided a year ago?

A copy of the original submission document signed by the Mayor of Bedford Borough and the Leader of Central Bedfordshire Council can be found on our website – we look forward to it being proudly displayed on theirs!

[www.cprebeds.org.uk](http://www.cprebeds.org.uk)

## Easyfundraising

Did you know that when you shop online - from your weekly shop to your annual holiday - you could be raising a free donation for CPRE Bedfordshire?

Shop with any of over 3,300 well-known retailers via the easyfundraising website and a percentage of what you spend is passed to CPRE Bedfordshire at no additional cost to you.

Retailers include Amazon, M&S, Vodafone, eBay, Tesco, Viking and many more. Please register to support us today at - [www.easyfundraising.org.uk/causes/cprebeds](http://www.easyfundraising.org.uk/causes/cprebeds).

It's really simple, and doesn't cost you anything - thank you for your support!

**easyfundraising**  
.org.uk

## Leave A Legacy

If you enjoy the beautiful countryside of Bedfordshire, please consider leaving a gift to CPRE Bedfordshire in your will.

Your legacy, no matter what the amount, will help us in our work to protect the countryside of Bedfordshire. Information about how to include CPRE Bedfordshire in your will can be found on our website.

[www.cprebeds.org.uk/how-you-can-help/leave-a-legacy](http://www.cprebeds.org.uk/how-you-can-help/leave-a-legacy)



*Continued from front page*

One positive thing about the plans is the development of East – West rail linking the two university cities. We fully support this long overdue improvement to our sustainable transport infrastructure.

We believe that it's crucial for local residents to be made aware of these far-reaching plans so that they can have a say in decisions made about these proposals. The plans would enormously impact the quality of life of residents across Bedfordshire.

We've been working with other CPRE branches across the growth corridor, questioning these plans, and instead putting forward a positive alternative approach which maximises housing on urban brownfield sites, invests in

public transport, uses local solutions on existing roads to deal with congestion points and seeks to support innovative, environmentally-conscious businesses.

Our view is that it simply does not make sense to pile all this development into the already overheated south east where house prices are already high for local people and infrastructure of all sorts - road, rail, health services, schools, etc - are at breaking point.

The proposed infrastructure improvements will not improve the lives of ordinary people when linked with this extreme level of housing development.

What we need from government is a housing strategy linked to an industrial strategy the purpose of which is to distribute growth more equitably across the UK.

These plans will cause huge environmental harm to Bedfordshire and do nothing to encourage development where it is most needed in the UK.

Meanwhile, Bedfordshire's local authorities are progressing their Local Plans, each proposing sites for new towns and villages along this corridor, which have angered many residents. Read more on Local Plans on pages 6-8.

## National News

### Planning for the Right Homes in the Right Places

Central Bedfordshire and Bedford Borough Councils will be hit with massive increases in housing - beyond the huge figures already suggested in their Draft Local Plans - if the government gets its way.

In September, the Department for Communities and Local Government (DCLG) ran a consultation called "Planning for the Right Homes in the Right Places", aimed partly at reforming the planning system to increase the supply of new homes. Proposals included changing the standard method used by local authorities to calculate their housing need.

Using this proposed new method, Bedford Borough's housing need rises from 950 per annum to 1281 pa, and Central Bedfordshire rises from 1600 pa to 2553 pa. Both councils have opposed these increases.

CPRE Bedfordshire's response to this poorly informed consultation fed into a response from CPRE national office which also strongly criticised the DCLG's method of calculating housing need and several of their other proposals.



# 30th Anniversary Photo Competition

To mark the 30th anniversary of CPRE Bedfordshire we ran a photo competition “Bedfordshire: A Changing Landscape”. Our winning entry can be seen on the front page, and our other winners feature here.



## Runner-up

### *Morning Glory by Joe McDonald*

This striking image shows a farmer at work as the sun rises over a field near Little Staughton. The judges especially liked the mood of the image, and the composition. Farming remains one of the most significant uses of land in Bedfordshire and will continue to have a huge impact on the character of its landscapes.

Looking through the 90 entries some themes and subjects seem to have been particularly popular. Many photos showed seasonal scenes from spring bluebells through autumn colour to frosty mornings. This was also picked up in images of farming and harvest, showing the rhythm of the year.

Bedfordshire's brick and gravel pits, once industrial but now repurposed for nature and leisure were well represented as were scenes from the Dunstable Downs and Chilterns, often including people out walking and enjoying the landscape. Ampthill Great Park also was a very popular location.

Wind turbines appeared in a number of shots and are a reminder that the move towards greener sources of power hasn't been uncontroversial.

Some entries captured new housing – often next to green fields and where and how much new housing should be built is an issue that features elsewhere in this magazine and will continue to be a key issue for Bedfordshire in the years ahead.

Finally, many pictures were simply beautiful views of rolling hills and show off some wonderful corners of our county.

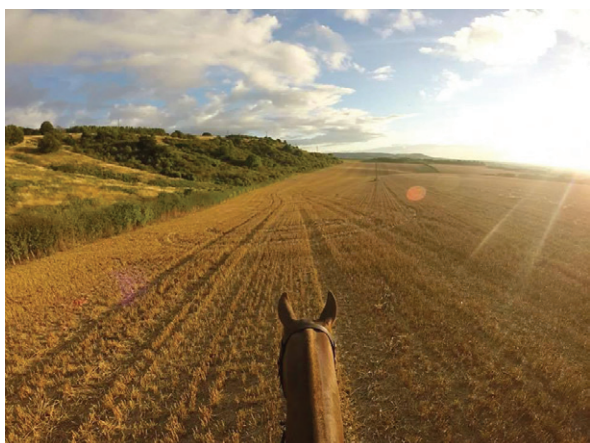
We will be using more of the entries to tell stories about the issues affecting Bedfordshire's countryside today across our social media accounts so keep an eye on them over the coming weeks and months.

## Commended photographs



**Growth by Helen Flack: Silsoe**

Growth creates changes to a village that impacts residents both positively and negatively.



**Homeward Gallop by Claire Davenport: Icknield Way Farm, below Dunstable Downs**

Every year, at the height of summer, the landscape changes from waist-high crop fields to bald stretches of stubble, and (with the farmers' permission) a wealth of new routes open up for horse-riders.



**Riseley Sunset by Tony Pay: Riseley**

The fields near Riseley Church just before harvest.



Did you know that there are more ways than ever to keep up to date with branch news and campaigns?

Like or follow us, join in with the conversations and if you're on Instagram use the hashtags #Bedfordshire and #cprebeds so we can see your photos of our beautiful county.

**Facebook @ CPREBedfordshire**

**Twitter @CPREBeds**

**Instagram @cprebeds**



# Update on Local Plans

CPRE Bedfordshire's planning team has been very busy over the last year responding to the Local Plan consultations for each of Bedfordshire's Local Authorities, which can be found on our website.

CPRE fully supports a plan led system and Local Plans which provide a clear framework for sustainable housing growth and employment, while at the same time protecting and enhancing our countryside.

One of our main approaches has been to raise awareness of the plans across communities in Bedfordshire, encouraging people to have their say on how their area develops.



## Central Bedfordshire Council's Local Plan 2035

CPRE Bedfordshire strongly opposes CBC's Draft Local Plan 2035 which calls for between 42,600 and 54,960 new homes to be built in Central Bedfordshire over the 20 year Plan period until 2035. This is massive - equivalent to building 14 new towns the size of Ampthill (4,000 homes). As a comparison, Bedford Borough Council plans to build around 19,000 new homes.

This Draft Local Plan is not about building the affordable homes urgently needed by local people – around 60% of the total number of new homes proposed will be built for people the Council will encouraged to move to Central Bedfordshire from elsewhere in the UK, keeping prices high.

CPRE Bedfordshire fully recognises the need for more housing, but rejects these estimates of housing need proposed by CBC as completely unjustified, without a credible evidence base and unsustainable.

It will cause irreparable damage to the quality of life of the people of Central Bedfordshire.

CBC proposes that it delivers this housing through huge developments that have angered many communities right across Central Bedfordshire. These include:

- A New Town over twice the size of Ampthill at Tempsford.
- New Towns across the Marston Vale, in the Aspley Guise triangle and major urban extensions to Biggleswade.
- Two New Towns are proposed north & west of Luton into Green Belt and impacting the Chilterns Area Of Outstanding Natural Beauty.
- A new A6 – M1 link road is proposed, part of which crosses the Chilterns AONB.

However, residents have largely been kept in the dark at this crucial stage of the Local Plan process about where precise locations of new development will be, since CBC have not yet released details of the sites they are considering for development – only those that have been put forward.

## Bedford Borough Council's Local Plan 2035

Parish Councils in the north of Bedfordshire have come together to oppose the building of New Towns in the area, proposed in Bedford Borough Council's Draft Local Plan 2035 earlier this year.

CPRE Bedfordshire are supporting this group, and attended meetings with the parish councils and the mayor on this issue last month.

Concern is growing amongst local residents not just over the New Towns but also the very high number of new homes (500–600) proposed for each of the villages of Sharnbrook, Bromham, Great Barford, Clapham and Wilstead.

At the time of writing, dates of the next round of consultation on BBC's Local Plan 2035 is unclear as the Council awaits the outcome of the DCLG consultation mentioned on page 3.

## Green Belt

As part of the Local Plan process, CBC commissioned an independent Green Belt Study, which found that “The majority of the Green Belt in Central Bedfordshire and Luton continues to serve its purposes very well, safeguarding the identity of South Bedfordshire by maintaining the openness of the countryside and protecting the dispersed settlement pattern”. The study also concluded that less than 1% of the total Green Belt land is making only a “weak” or “relatively weak” contribution to all Green Belt purposes.

Despite this endorsement of the existing Green Belt in Central Bedfordshire, the contents of this Green Belt Study have been largely ignored or taken out of context, with over 900 ha of Green Belt land now being considered for housing and over 200 ha for employment.

CPRE Bedfordshire fails to see how the Council can justify the “exceptional circumstances” required by government for removing this land from the Green Belt. Nor can we find in any of the documents any assessment of the cumulative damage large scale removal would have to the effectiveness of the Green Belt as a whole.

Our full and detailed submission to CBC’s draft Local Plan consultation can be found on our website.

## Affordable homes top priority says CPRE Bedfordshire

CPRE Bedfordshire is supporting the inclusion of a minimum of 30% affordable homes in the new Local Plans currently being developed by Local Authorities (LAs) across Bedfordshire. We expect this to be enforced on all housing developments in both rural and urban areas.

By affordable homes we mean homes for “affordable” rent, “social” rent and “shared ownership”. They should be the top priority in all new developments.

We would also like LAs to define the proportion of the mix that should be allocated for “social rent” and include it in their Local Plan.

In the past, Local Authorities have been unable to enforce a minimum number of affordable homes on developers who have been able to use the issue of “project viability” to renege on previously signed agreements to include affordable homes in developments.

An example is the current development in Kempston West near Bedford where over 200 families have been deprived of affordable homes because David Wilson Homes (part of Barratt Developments Plc) refused to build them. This despite having signed an agreement with Bedford Borough Council when planning permission was first given, to do so.

In CPRE’s response to the Government’s latest consultation, “Planning for the Right Homes in the Right Places” (see page 3), we have urged that developers’ ability to use the issue of “viability” should be severely constrained and if the issue is used, all financial papers submitted by developers should be available for public scrutiny.

## What Next?

The next round of consultation for CBC’s Local Plan is expected in January, and we will be publishing our initial comments on it shortly after on our website, before submitting our final response.

In light of new figures released by the government in its “Right Homes in the Right Places” consultation (see page 3), CBC claims that it needs to rush the Local Plan so that it is ready for inspection by the end of March, in order to prevent even higher housing numbers being imposed on them by government.

**Overall, this feeds into a very serious concern we have about the consultation process undertaken by CBC. A rushed Local Plan will inevitably mean a bad Local Plan with far reaching planning decisions made without the proper involvement of local people. There is already a large and growing “democratic deficit” in Central Bedfordshire regarding the way in which long term planning decisions are being made.**

# Luton Borough Council adopts their Local Plan

Luton Borough Council adopted its new Local Plan for the period 2011- 2031 on 7th November. This will now be used to determine planning applications and guide future developments in the Borough. An Examination in Public was held into the Draft Plan July 2016-January 2017 and the Government Inspector reported his findings and proposed modifications to the plan in April 2017, which were subject to further consultation.

On a positive note, the Council has decided to leave its Green Belt relatively unchanged for the time being, recognising that “the Green Belt areas serve the national purposes of the Green Belt”. The big issue however remains unsolved - how and where will Luton meet its projected housing need?

Luton’s identified Housing Need is 17,800 homes up to 2031. The Borough is relatively small, with a lot of development. This has meant Luton has only been able to demonstrate it can provide for 8,500 homes within the Borough leaving a shortfall of 9,300 to be provided within the neighbouring Authorities’ areas (expected to include Central Bedfordshire’s Green Belt).

CPRE made representations during the Plan process, on a number of matters including encouraging the Council to ensure all suitable available sites were used as intensively as possible for housing, including some sites which had been allocated for employment but lain undeveloped for many years.



We are pleased to note a number of changes from the original draft Plan including:-

- An overall rise from 5,700 to 8,500 homes which Luton consider they can accommodate within the Borough.
- The housing allocations increasing on some sites, for example the allocation at Napier Park (the former Vauxhall site) has risen from 600 units to 1,300 units.
- The removal of the allocation of Luton Football Club on the land South of Stockwood Park – our recommendations were for a more central location.
- Recognising that there are still unanswered questions and new information coming from other Authorities’ emerging Local Plans, such as Central Bedfordshire, the Inspector has recommended and the Council agreed to an early review of the Local Plan. This will start before the end of 2019 with submission of the review for examination by mid- 2021.



# Planning applications

## Speculative developers continue to target Central Bedfordshire

While Central Bedfordshire Council is without an up-to-date Local Plan, it continues to be targeted by speculative developers.

This year, CPRE Bedfordshire's planning team has responded to 21 planning applications across Central Bedfordshire. These have been for developments in Ampthill, Clophill, Stotfold, Maulden, Westoning, Pottton, Cranfield, Gravenhurst, Silsoe, Northill, Linslade, Meppershall, Studham, Sutton and Shillington - in many cases for large numbers of housing on the outskirts of the village. We're pleased to report that so far only three of these applications in Central Bedfordshire have been granted, with more decisions pending.

However, this doesn't tell the full story, since a number of these applications have been sent to appeal and the applications re-issued if refused, or withdrawn only to be re-issued. Much of this depending on the status of CBC's five year housing land supply.

We have reported in previous BM issues about the importance for Central Bedfordshire to prove it has a five year housing land supply, without which developers have a far stronger hand in winning any appeals against refusal.

In many applications developers claim that CBC doesn't have a five year housing land supply. Some have said that CBC's claim to a five year land supply is not accurate, while others say that with the increased figures in the Local Plan and with the government wanting to increase build out, that the current five year land supply claim is no longer justified as more building is needed to meet that target.

We were encouraged by the CBC recent statement of a 5.94 year land supply. However, we are aware of Appeal cases where the Inspector has agreed with the developer, so granting permission on grounds that the need for housing outweighs the harm caused by development of the site.

Given the huge housing numbers proposed by CBC for their new Local Plan, we are concerned about the effect on the Council's ability to maintain a five year supply of land for housing – since this would rise accordingly.

## CPRE Bedfordshire fights off Planning Appeal in Bromham

In September, CPRE Bedfordshire joined Bromham Parish Council and Bedford Borough Council (BBC) to fight an Appeal brought by the developer, Kier Group against a decision by BBC to refuse them planning permission for 93 new homes in Lower Farm Road.

The government appointed Inspector dismissed the appeal on the basis that BBC could demonstrate that they had a robust five year forward land supply and that the current Local Plan was still applicable when determining planning applications.

This is an important decision because it confirms the current policy of BBC that housing developments will not be

allowed in "open countryside" outside Settlement Policy Areas except in very special circumstances.

CPRE also argued that the appellant was trying to avoid the local democratic process because Bromham Parish Council were in the process of developing their own Neighbourhood Plan. The decision as to where any new developments should be sited in their community would be made during the Neighbourhood Plan process which involves consultation with local residents.

# CPRE Bedfordshire People

## New Branch Manager

Firstly, I'd like to say a big thank you to all our volunteers for the time, effort and commitment you give to CPRE Bedfordshire.

I am delighted to be taking over from the great work that Nicola has done as Branch Development Manager and am very much looking forward to meeting you, our invaluable volunteers, supporters and members.

I'm quickly learning about the fantastic work that is being done within CPRE nationally and CPRE Bedfordshire and I'd welcome the opportunity to meet with you and find out more about the work you do and to discuss how I can support you.

As you know, this is a very busy time for CPRE and I am looking forward to working with you to further enhance the profile of CPRE Bedfordshire and to passionately campaign to protect our beautiful countryside.

CPRE Bedfordshire does fantastic work, often unrecognised and I am keen to bring in more volunteers, tell more people about what we stand for and to continue to play a vital role in standing up for the countryside, so that it can continue to sustain and enchant future generations.



My business background is in HR and I have worked within both the private and public sectors. For a number of years, I have run my own training company designing and delivering training programmes to a diverse range of businesses. In

particular I enjoy working with people, matching skill sets and organising events. In my spare time, I volunteer for a children's charity raising awareness, fundraising and campaigning.

I grew up in stunning rural Perthshire and the countryside has always been an important part of my life. I'm a keen walker, and now live in a small north Bedfordshire village with my son, our dog and two horses.

I am really keen to hear from you and look forward to finding out what's important to you and the work you enjoy being involved with at CPRE Bedfordshire.

**Please do get in touch. You can contact me by telephone on 01234 353 331 or drop me an email at [susan.walls@cprebeds.org.uk](mailto:susan.walls@cprebeds.org.uk)**

**Susan Walls**

## Your branch needs you!

We are looking for volunteers to join our planning team to research and respond to local planning issues with a particular emphasis on Central Bedfordshire.

We also need an Honorary Secretary to sit on our Board of Trustees - arranging and taking minutes of our Executive Committee meetings.

Click on the Get Involved link on our home page to find out more about these roles. [www.cprebeds.org.uk](http://www.cprebeds.org.uk) or contact [susan.walls@cprebeds.org.uk](mailto:susan.walls@cprebeds.org.uk)

## Branch News



### CPRE Summer Walk 2017

At the end of June we enjoyed a walk around Putnoe Wood and Mowsbury Hillfort led by the knowledgeable and enthusiastic team from The Friends of Putnoe Wood and Mowsbury Hillfort and Bedford Borough Council Park Rangers.

The group won a well-deserved CPRE Mark in our Living Countryside Awards 2016 for their successful efforts to enhance biodiversity at the Hillfort.

We started in the woods where we learned about their history; as a convenient source of local timber, the wood was first decimated during the siege of Bedford Castle in 1224 and again during the First World War. The woods are now managed through coppicing and the stream has been dammed to provide a wildlife corridor; there are homes and food for many varieties of birds and insects.

At the hillfort the two wildflower meadows were full of colour and we spotted two varieties of wild orchids. Our guides explained about the archaeology of the site which includes features of the Iron Age hillfort as well as medieval fishponds and a moated manor house which once stood on the inner island. We also explored the orchard of traditional local varieties of apples, pears and plums. From the outer meadow and the ramparts there were views out across Bedford and beyond – we could see the Airlander parked outside the Cardington



Sheds. From this vantage point Bedford looked very green.

Before heading back to Mowsbury Park we took a slight detour over to Freeman's Common which, following a local campaign supported by CPRE Bedfordshire, has been saved from development.

It was wonderful to explore these gems on the edge of Bedford with such helpful guides and we're very grateful for their time and expertise.

## CPRE Award for Trustee

To celebrate the 30th anniversary of the Branch, the trustees and some of our volunteers enjoyed a walk and pub lunch in Eversholt during November. Over lunch, Gerry Sansom presented Alan Apling (pictured) with a special Outstanding Achievement award from CPRE National Office in recognition of his contribution to the work of the Branch as a trustee and past treasurer. It was also an opportunity for the trustees to bid farewell to outgoing Branch Development Manager Nicola Scholfield, and welcome new Branch Manager Susan Walls.



## Living Countryside Awards 2018

We will be holding our Living Countryside Awards again in 2018. Next year we will be asking for applications from people and projects that are improving the county's biodiversity, landscape, building design and local sustainability. So get your thinking caps on now - anyone working to improve the future of our county's green spaces and countryside will be eligible.

Visit [www.cprebeds.org.uk/awards](http://www.cprebeds.org.uk/awards) to read more about winners from previous years.

*Dates for your diary*  
**AGM date**  
**18th April 2018**  
**Planning workshop date**  
**16th March 2018**

## Edward Bean

8 February 1948- 21 August 2017

### *An Appreciation*

Edward's untimely death in August has shocked many of us. I first met Edward in 2002 when I joined CPRE Bedfordshire and began to appreciate Edward's formidable IT skills. He was always there to sort out a practical problem at work, at home or at CPRE events elsewhere. But there was so much more to Edward's multi-faceted life as I learned at his funeral at St Mary's church, Bletsoe.

Edward was born in Wilstead. His engineering skills led him to work for Texas Instruments which took him overseas a great deal, before he set up his own IT business from his home in Bletsoe working for local companies. Mike Gibbons, co churchwarden, gave

us an hilarious account of how Edward (also known as Ted) threw himself into every village organisation and was always ready with his toolkit to fix anything.

Edward was a founding member in 1994 of the CPRE North Beds District Group which met to respond to planning applications and was vice-chair of the county branch (1997-2002) and for a time press officer, also setting up its first website. He campaigned vigorously on many local issues. Most recently in 2011 at the Public Inquiry on the proposed biomass recycling plant at Twinwoods he asked the applicant the probing questions which the Borough Council's barrister failed to ask.

Edward was an active member of numerous other organisations and had



a great love of folk which he shared with Alison. He was passionate about local history and has left his considerable collection of vintage postcards of local views to the Bedfordshire Archives & Records Service.

Mike captures Edward's many qualities: alongside "his dogged determination, bloody-minded at times" shone "his underlying traits of being completely honest, kind, thoughtful, generous with his time and talents, deeply caring and a very good friend".

Edward first became ill six years ago from a brain tumour which he fought valiantly. He leaves his wife Alison, Howard and Julia and two grandchildren.

*Ann Collett-White with help from Alison and Howard Bean and Mike Gibbons*



## 30th Anniversary Wordsearch

Find all 30 words that relate to our beautiful county of Bedfordshire and the work of our CPRE branch here.

AMPTHILL GREAT PARK	GREEN BELT
AONB	GREENSAND RIDGE
BEDFORDSHIRE	GROVE PLACE
BOROUGH COUNCIL	IVEL
CAMPAIGN	JOHN BUNYAN
CHARITY	LIGHT POLLUTION
CHILTERNES	LOCAL PLAN
CLANGER	MOTORWAY
CONSERVATION	NATTERJACK TOAD
CONSULTATION	NEIGHBOURHOOD
COUNTRYSIDE	PARISH COUNCIL
CPRE MARK	PLANNING
FARMING	RENEWABLE
FLIT	SHUTTLEWORTH
GREAT OUSE	WOBURN ABBEY



## Hedgehog in the Spotlight

Ending our magazine on a positive note, we're delighted to share this entry to our photo competition by Whizz Middleton. It was taken in August 2017 at Barton Hill Farm, Lilley - a previous Living Countryside Awards CPRE Mark winner for its commitment to managing the land in a way that protects and enhances wildlife: "This nocturnal visitor has been seen every night for a few weeks now. It is the first hedgehog we've seen for years at the farm – a sure sign of how the landscape and habitat have changed."

## You can help save the countryside from as little as £3 per month

Help protect the countryside by becoming a member of CPRE. We all need the countryside – whether it's for fresh air, delicious local produce, beautiful landscapes, or vibrant towns and villages – the countryside is invaluable. By joining CPRE, you are helping to ensure that a beautiful living countryside thrives for generations to come.

CPRE membership starts from as little as £3 per month, but giving at a higher level will help us do more to protect the countryside.

Becoming a member is easy go to [www.cprebeds.org.uk](http://www.cprebeds.org.uk) to join online or download a membership form.

## About us

**Campaign to Protect Rural England** is a national charity that exists to promote the beauty, tranquillity and diversity of rural England by encouraging the sustainable use of land and other natural resources in town and country.

We have 60,000 supporters, a branch in every county, eight regional groups, over 200 local groups and a national office in London. CPRE is a powerful combination of effective local action and strong national campaigning.

Our Patron is Her Majesty the Queen. Our President is Emma Bridgewater.

**Bedfordshire Matters** is the biannual magazine of Bedfordshire's CPRE branch. CPRE Bedfordshire is a local independent charity who works to protect and promote the countryside and green spaces of Bedfordshire.

Registered Charity No: 1023435



**Bedfordshire**  
Campaign to Protect Rural England

CPRE Bedfordshire  
5 Grove Place  
Bedford MK40 3JJ



01234 353331  
[info@cprebeds.org.uk](mailto:info@cprebeds.org.uk)  
[www.cprebeds.org.uk](http://www.cprebeds.org.uk)

Printed by Free Range Design & Print Solutions  
Cover photo: Winter sun on a frosty morning in  
Turvey by Ian Partridge

