

Oxford to Cambridge Expressway

Corridor Leaders Meeting

17 January 2018

Matt Stafford, Project Director,
Highways England

Steve Tomkins, Stakeholder Engagement
Delivery, Project Team

Key question...?

How can we work collaboratively in the most mutually supportive manner possible?

Scope

- Ox-Cam strategic objectives
- Project (Stage 1) timeline & targets
- Current approach
- Engagement framework
- How we are engaging and communicating?
- Questions

Ox-Cam strategic objectives

Connectivity



....step change
east-west
....integrated with
road & public
transport
networks....

Free-flowing Network



Improve the
quality, speed &
reliability of
journeys....

Economic Growth



Support
transformational
economic
growth....

Protected Environment



....enhance
quality of life for
customers &
communities....

Safety



Deliver road
safety
improvements...
.the right traffic
on the right
roads

Customer satisfaction –
improve the user experience

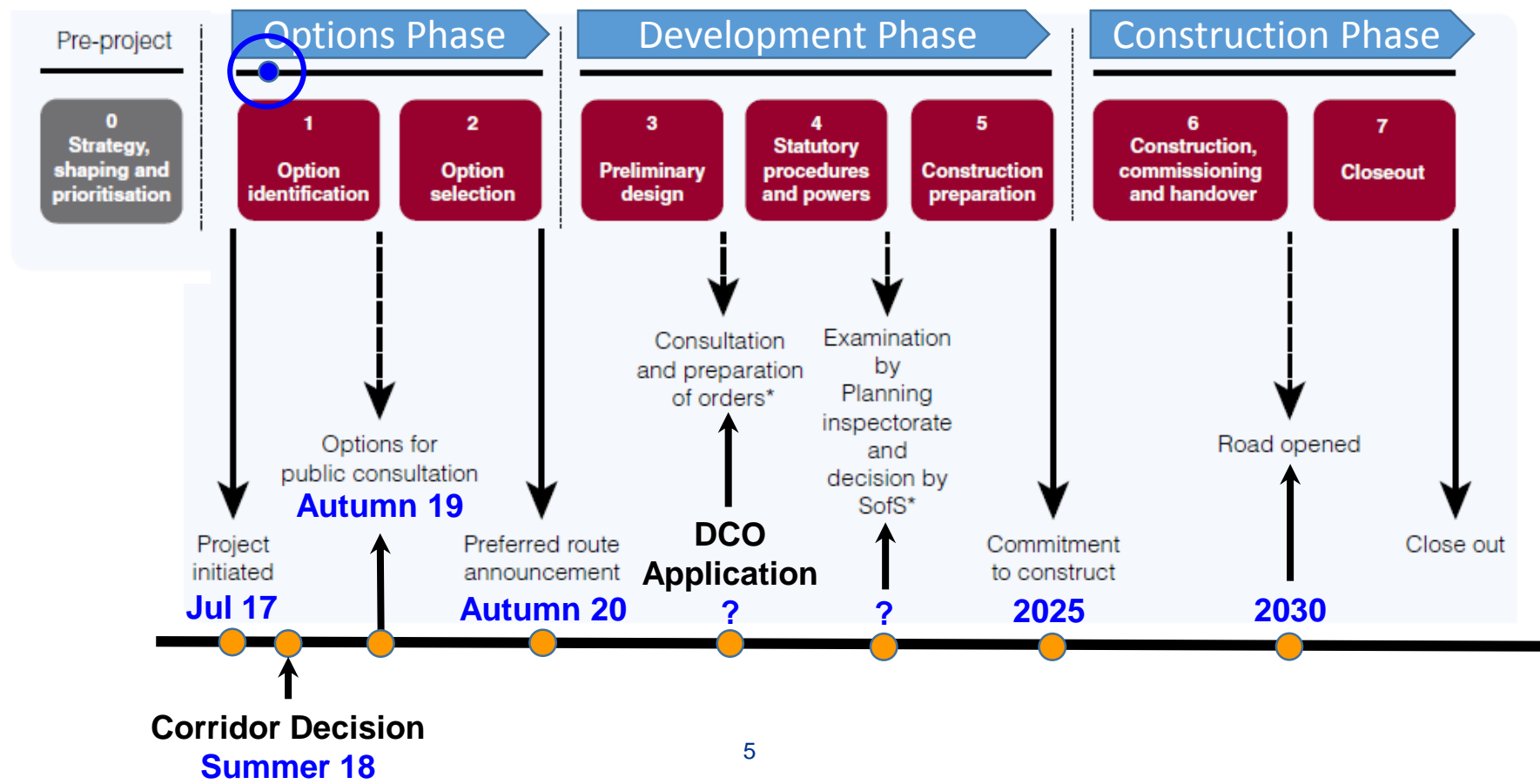
Major Project Milestones & Lifecycle

Stage 0 - Strategy, shaping and prioritisation – COMPLETED

Key decision points in the Major Projects lifecycle

The stages reflect the significant decision points in the project's development and delivery

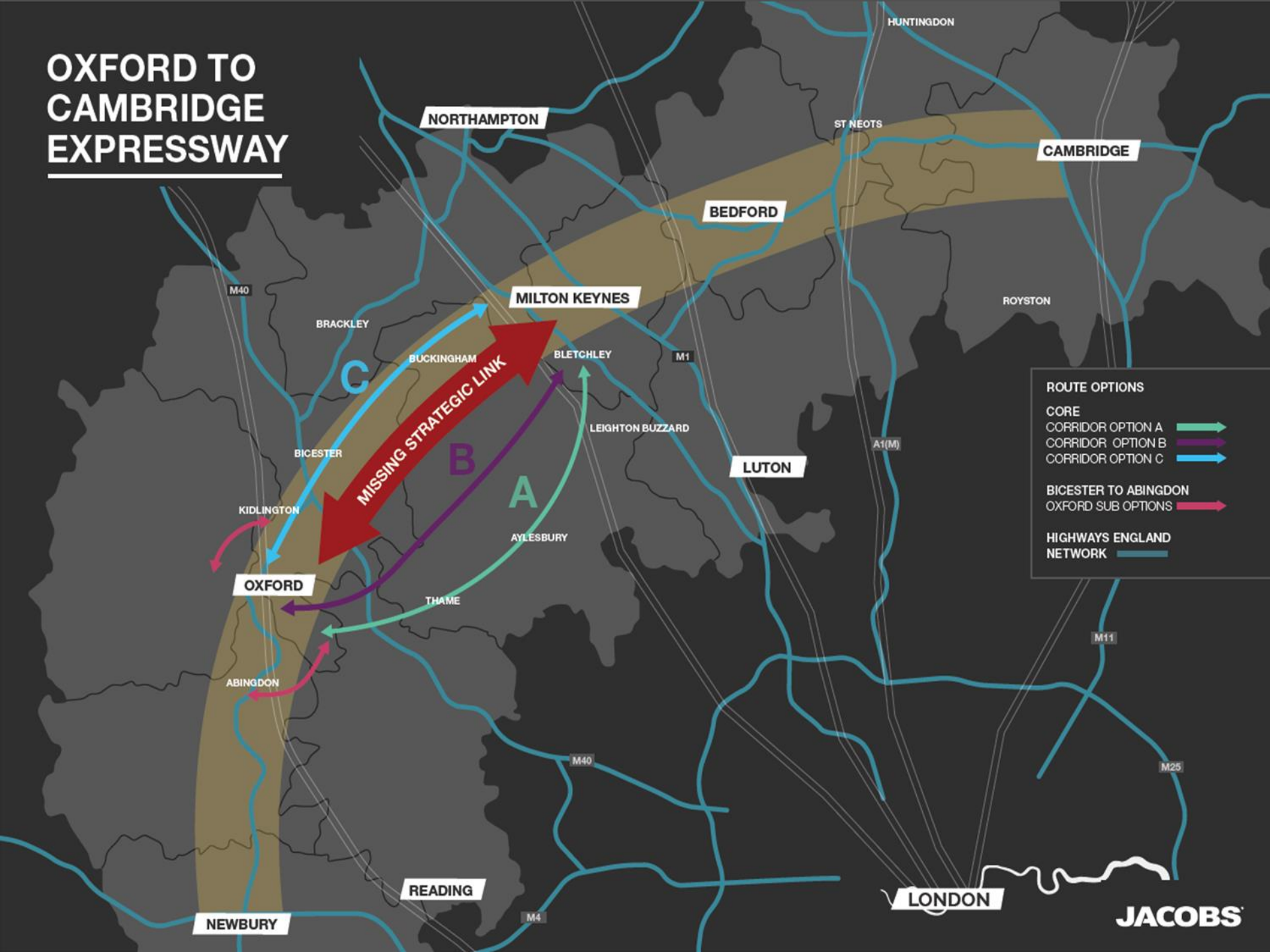
Ox-Cam is here!



Targets to Hit

- Corridor decision – Summer 18
- Route options analysis commences – Autumn 18
- Design Fix for non-statutory consultation (Stage 2: Option Selection) – Spring 19
- Route options shortlist for consultation - Autumn 19
- Preferred route announcement - Autumn 20

OXFORD TO CAMBRIDGE EXPRESSWAY



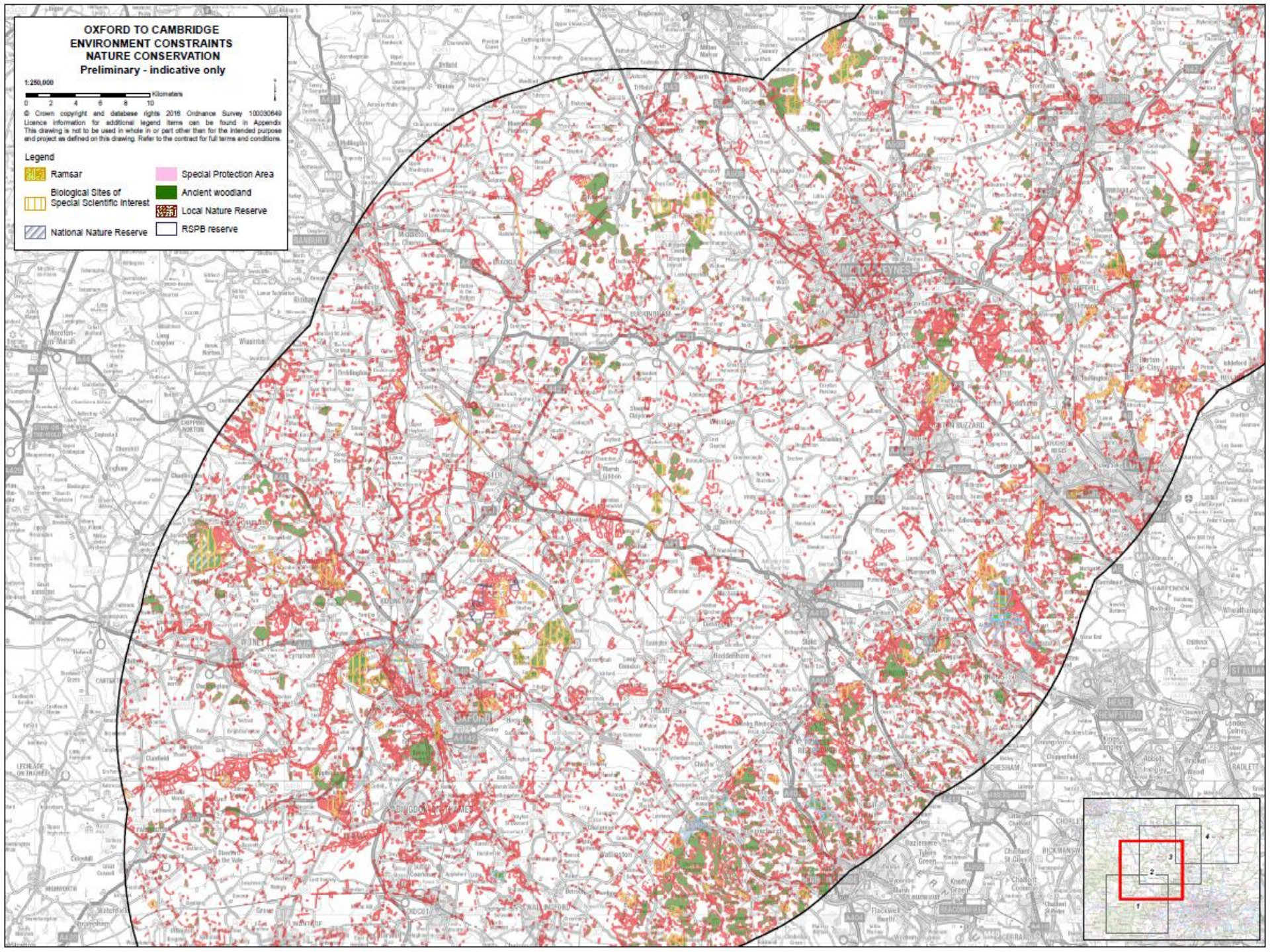
**OXFORD TO CAMBRIDGE
ENVIRONMENT CONSTRAINTS
NATURE CONSERVATION**
Preliminary - indicative only

1:250,000
0 2 4 6 8 10 Kilometers

© Crown copyright and database rights 2016 Ordnance Survey 100030640
Licence information for additional legend items can be found in Appendix
This drawing is not to be used in whole or in part other than for the intended purpose
and project as defined on this drawing. Refer to the contract for full terms and conditions.

Legend

- | | |
|--|---|
|  Ramsar |  Special Protection Area |
|  Biological Sites of
Special Scientific Interest |  Ancient woodland |
|  National Nature Reserve |  Local Nature Reserve |
| |  RSPB reserve |

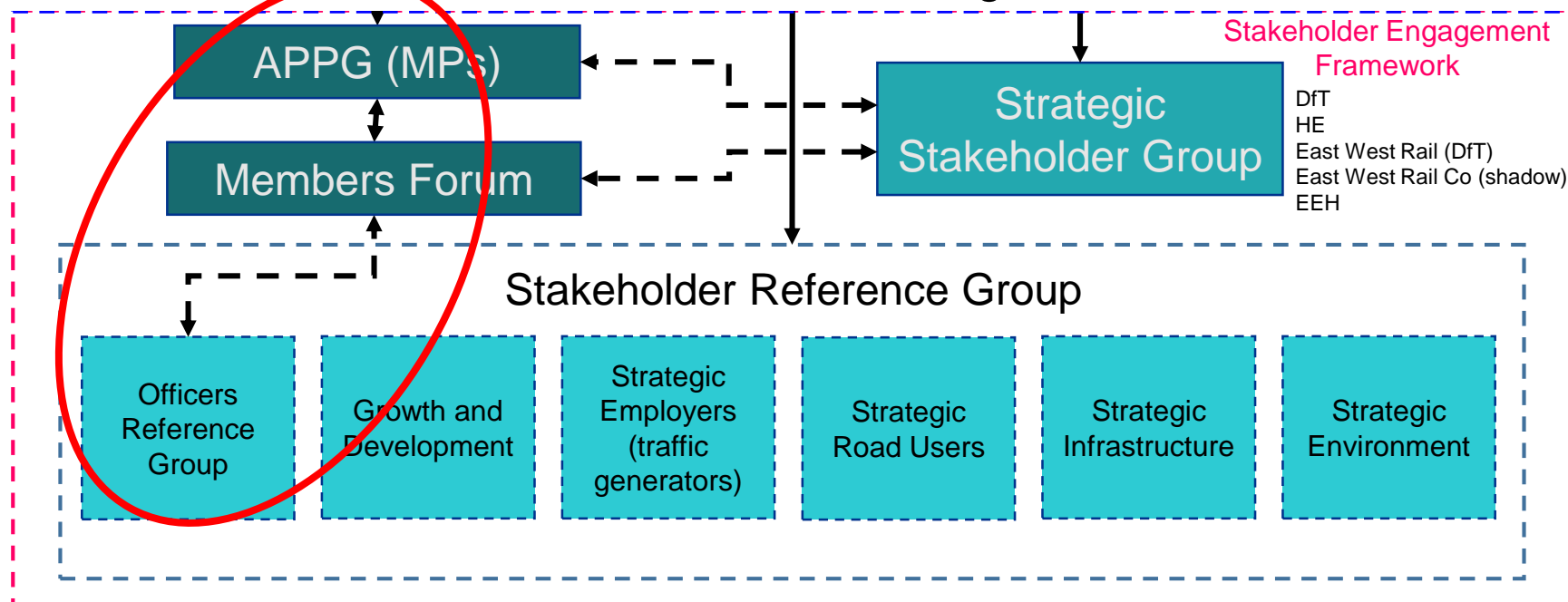


Ox-Cam Stakeholder Engagement: Current Approach

- Recognise existing political engagement landscape
 - Limited human resources, time & money
 - Seeking combined ‘technical’ conversations
- Collaboration - relate to other projects / schemes across M4 to M11 arc, particularly:
 - East West Rail
 - Connectivity Study (*in due course*)
- ‘UNDERSTAND, before trying to be understood’
- Create dynamic dialogue
- Expectation management

How are we Engaging & Communicating

- Functional SRG Forums (Dec 17)
- Extant cross-corridor platforms (Jan 18)
- EWR & EEH connectivity (23 Jan 18)
- APPG (31 Jan 18)
- Ox-Cam Members Forum (9 Feb 18)
- Highways England webpage
- One on one meetings





Department
for Transport



highways
england

ENGLAND'S
ECONOMIC
HEARTLAND

Questions ?